

VIZOR® SHELTER



Unique Architectural Styling

The Vizion® is a beautiful cantilever designed shelter that is able to accommodate most Dero bike rack systems, including vertical models. This innovative, attractive, and functional bike shelter is a perfect addition to your facility, especially for smaller spaces.

Patent D748,562

PRODUCT & PRICING INFO CONTACT

 **STREETSCAPES**
STREETSCAPES.BIZ

Info@streetscapefurniture.com ■ 303.398.7040

VIZOR® SHELTER

Easy to expand on

The modular design of the Vizer® Shelter allows you to expand as necessary to meet your bike parking capacity needs



FINISH OPTIONS

Galvanized



Powder Coat

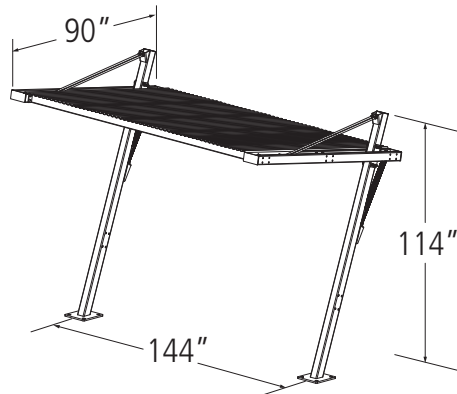
White	Black	Light Gray RAL 7042	Deep Red RAL 3003	Yellow RAL 1023
CNH Bright Yellow	Orange RAL 2004	Blue RAL 5005	Sky Blue RAL 5015	Hunter Green RAL 6005
Light Green RAL 6018	Green RAL 6016	Sepia Brown RAL 8014	Bronze	Silver 9007
Dark Purple	Flat Black	Wine Red RAL 3005	Beige RAL 1001	Iron Gray 7011

SOLAR POWERED LIGHTING AVAILABLE

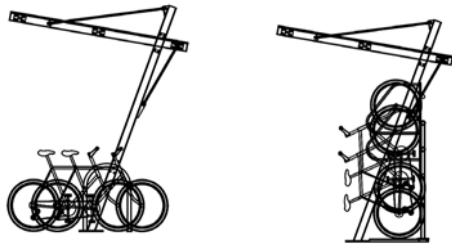


VIZOR® SHELTER

Submittal Sheet



Patent D748,562



With Hoop Racks
Capacity: 8 Bikes

With Ultra Space Savers
Capacity: 8 Bikes



With Campus Rack
Capacity: 6 Bikes

Dero Shelters can be used in a modular fashion (shared uprights) however, when used in this manner, please consult a Dero Bike Rack sales associate for layout, as the rack spacing and bike capacity can change!

CAPACITY

Varies by rack model

MATERIALS

Uprights: 4"x5/16" square tube
Purlins: 4"x2"x3/16" rectangular tube
Feet: 5/8" plate
Rafter: 4"x2"x3/16" rectangular tube
Roof Panels: Type S deck, 26g galvanized steel

FINISHES



Galvanized

An after fabrication hot dipped galvanized finish is our standard option. The Vizer® Shelter roof comes galvanized as the standard option.



Powder Coat

Our powder coat finish assures a high level of adhesion and durability by following these steps:

1. Sandblast
2. Epoxy primer electrostatically applied
3. Final thick TGIC polyester powder coat

MOUNT OPTIONS



Surface Mount

It is the responsibility of the installer to ensure that all base materials into which the shelter will be installed can support the rack and will not be damaged by any required installation procedures. See structural drawings for details.

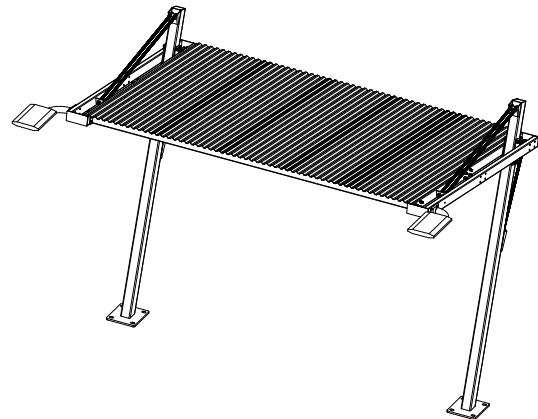
LOAD DATA

Dead load = self weight of structure
Live load = 40 psf
Wind load = 90 mph exposure B
Seismic load = Moderate
Footing: see page 4
Anchor bolt = .75" diameter x 14.625" Simpson Torq-Cut anchor

LIGHTING

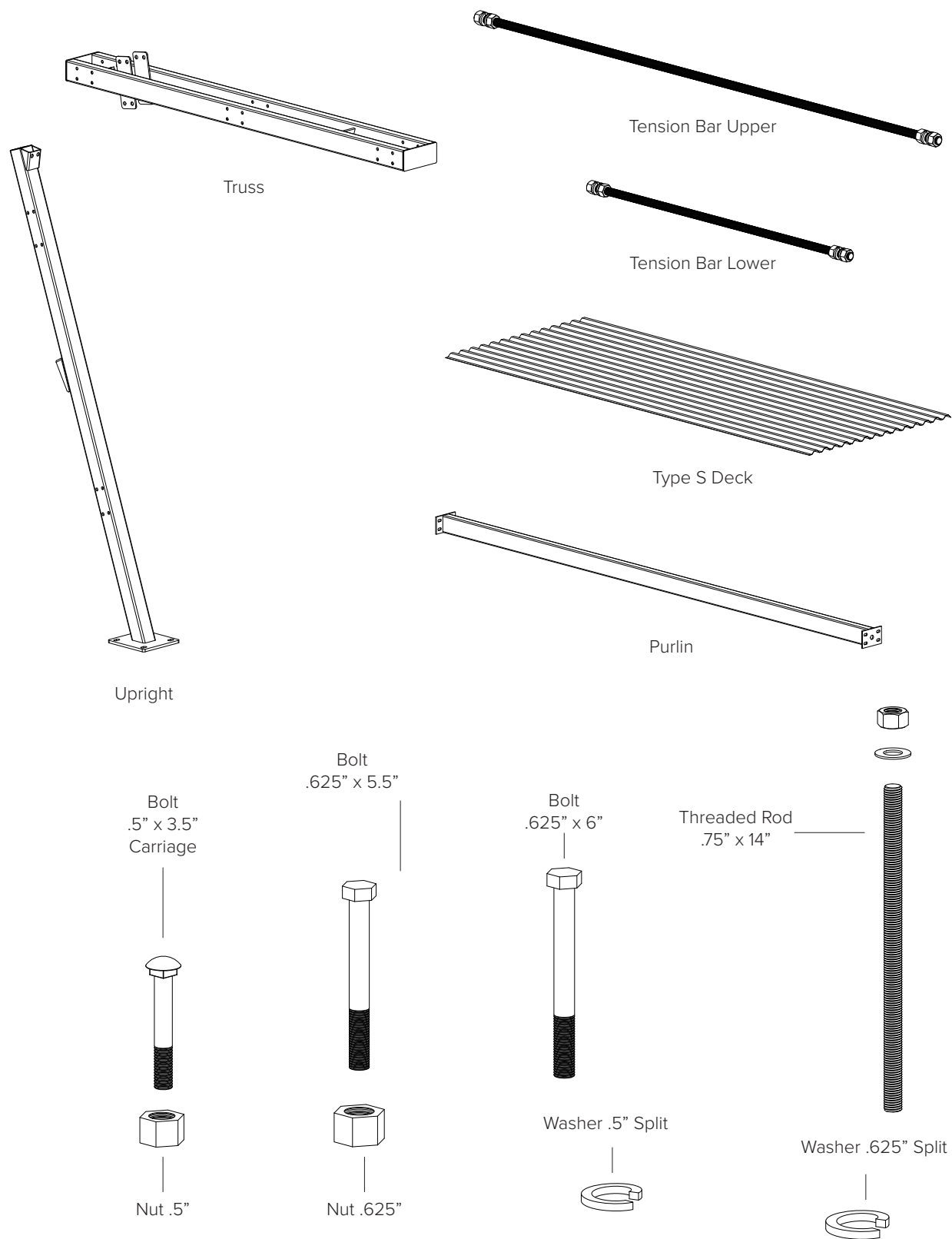


Solar powered lights are available for an additional charge



VIZOR® SHELTER

Parts List

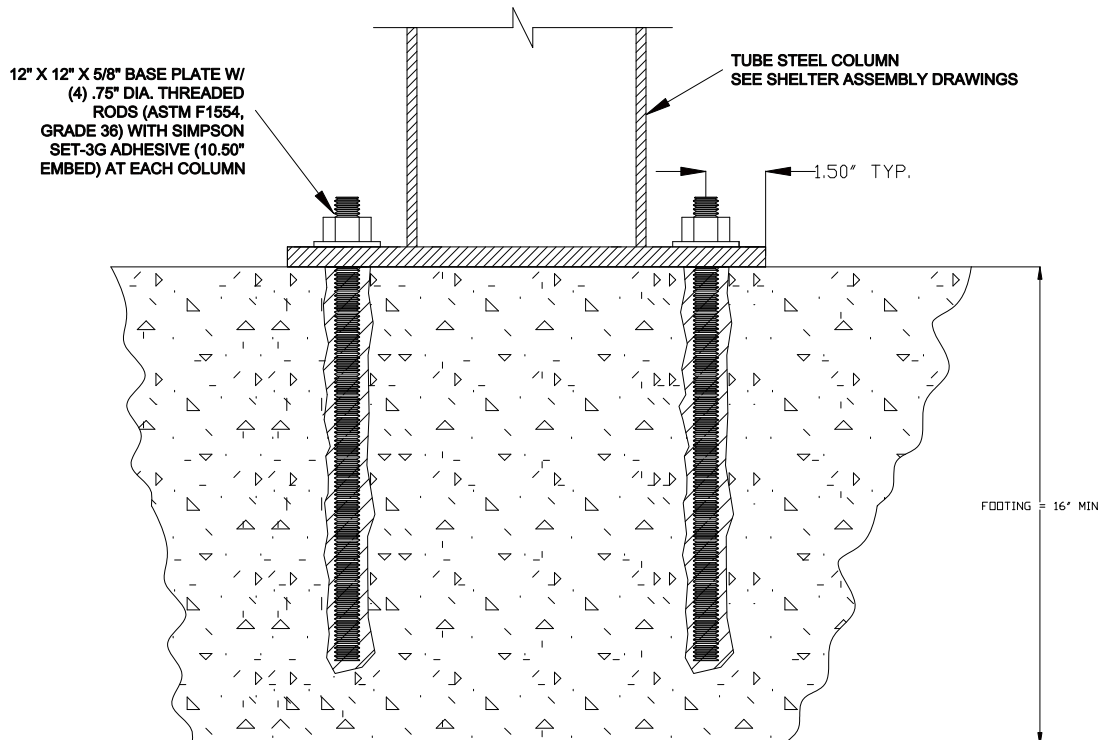
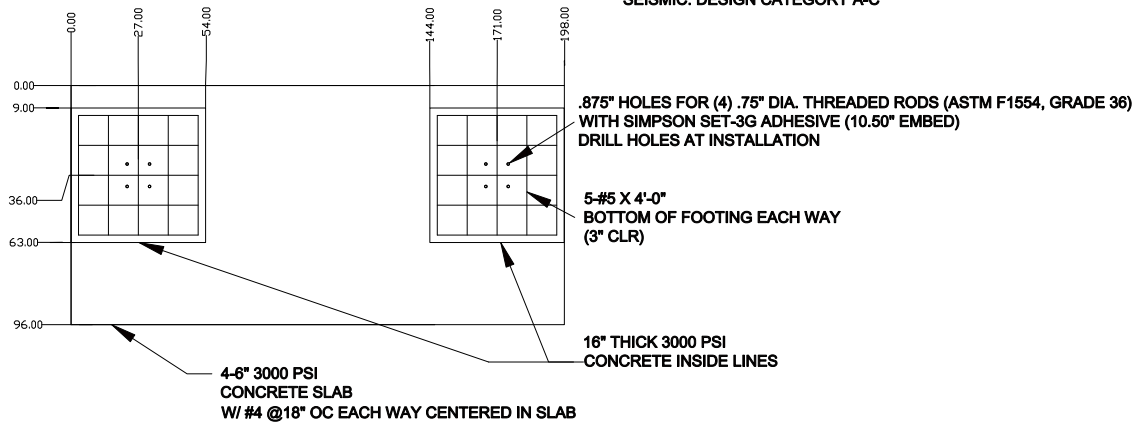


VIZOR® SHELTER

Footing Details

GENERAL STRUCTURAL NOTES:

1. FOOTING CONCRETE STRENGTH = 3000 PSI
 2. REBAR STRENGTH = 60 KSI (ASTM A615, GRADE 60)
 3. THREADED RODS = 36 KSI (ASTM F1554, GRADE 36)
 4. ADHESIVE = SIMPSON SET 3G. NOTE THAT SPECIAL INSPECTION OF BOLT INSTALLATION IS REQUIRED PER IBC 2015.
 5. FOOTING SHALL BE PLACED ON WELL COMPACTED AND FREE DRAINING SOIL.
 6. DESIGN PER IBC 2015, RISK CATEGORY 1
- SNOW: 60 PSF GROUND SNOW
WIND: 105 MPH, EXP. B
SEISMIC: DESIGN CATEGORY A-C



VIZOR® SHELTER

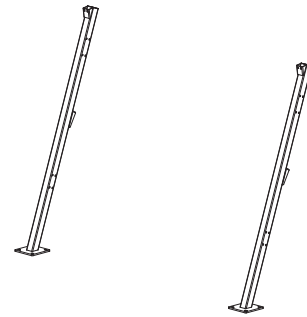
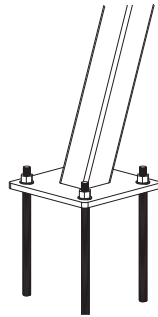
Installation Instructions

TOOLS NEEDED

Tape Measure
Marker or chalk
Level
Sledge Hammer
Rubber Mallet
Large Hammer Drill
Standard Drill
3/8" Socket with drill attachment

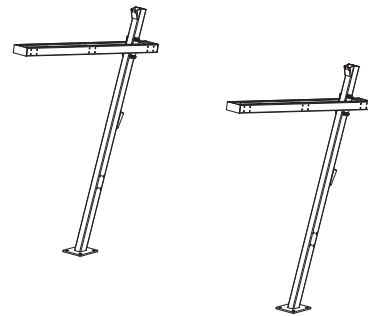
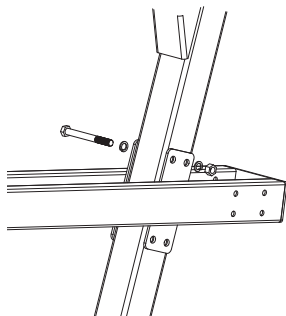
7/8" Diameter Masonry Bit
5/8" Diameter Masonry Bit
3/4" Wrench/Socket
15/16" Wrench/Socket (2)
1 1/8" Wrench/Socket
1 1/4" Wrench
Spud Wrench

1



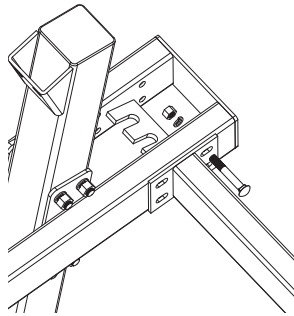
Place Uprights based on footing diagram and drill (4) 7/8" diameter holes in concrete 12" deep for each Upright. Arrange special inspection of anchor holes and anchor/epoxy installation per IBC 2012. Consult Simpson Set 3G epoxy instructions for further detail. After inspection and sufficient epoxy cure time, the Uprights may be placed over the threaded rod and secured with washers and nuts finger-tight.

2

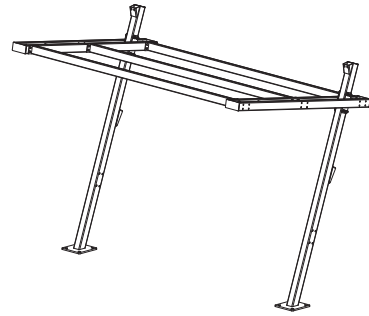


Lift Truss over the Upright and secure with (4) 5/8" x 6" bolts, (8) 5/8" lock washers, and (4) 5/8" nuts.

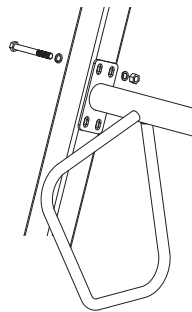
Installation Instructions

3

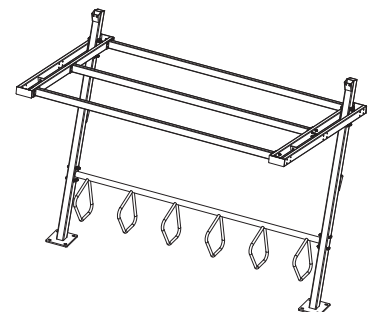
Place the first Truss and secure with (4) 1/2" x 3.5" carriage bolts, (4) 1/2" lock washers, and (4) 1/2" nuts on both sides.

4

Continue securing the remaining Purlins. Leave nuts finger-tight if a Campus Rack will be added. Tighten if no Campus Rack will be added.

5

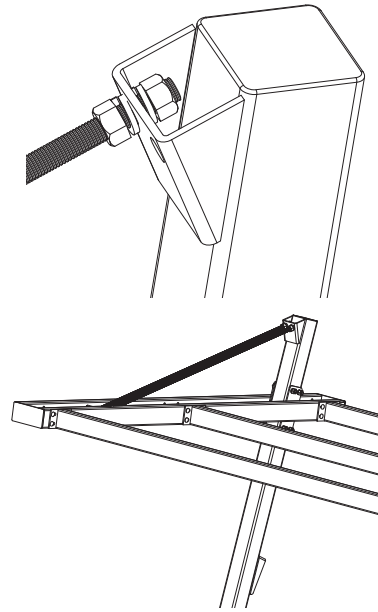
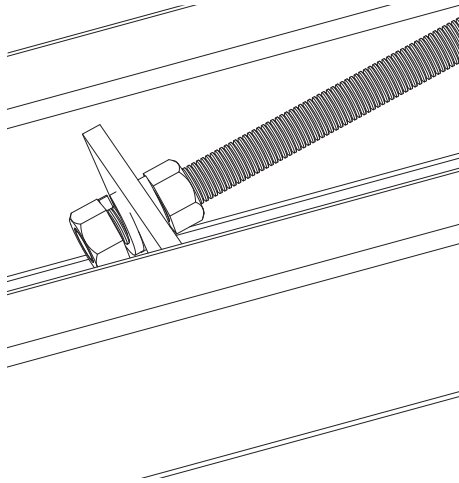
If using a Campus Rack, secure with (4) 5/8" x 5.5" bolts, (8) 5/8" lock washers, and (4) 5/8" nuts on both sides.

6

Completely tighten truss bolts and Campus Rack bolts if applicable. Completely tighten anchors to 240 ft-lbs.

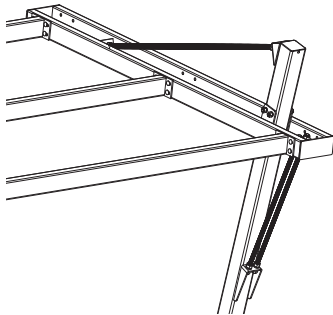
Installation Instructions

7



Secure the upper Tension Bars with (4) 3/4" nuts and (4) 3/4" lock washers each.

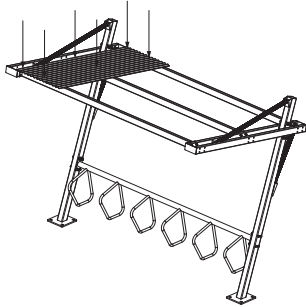
8



Secure the lower Tension Bars with (4) 3/4" nuts and (4) 3/4" lock washers each.

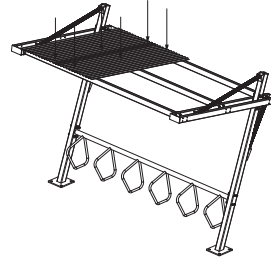
Installation Instructions

9



Place the first section of Type S Deck and secure with (6) self-drilling screws.

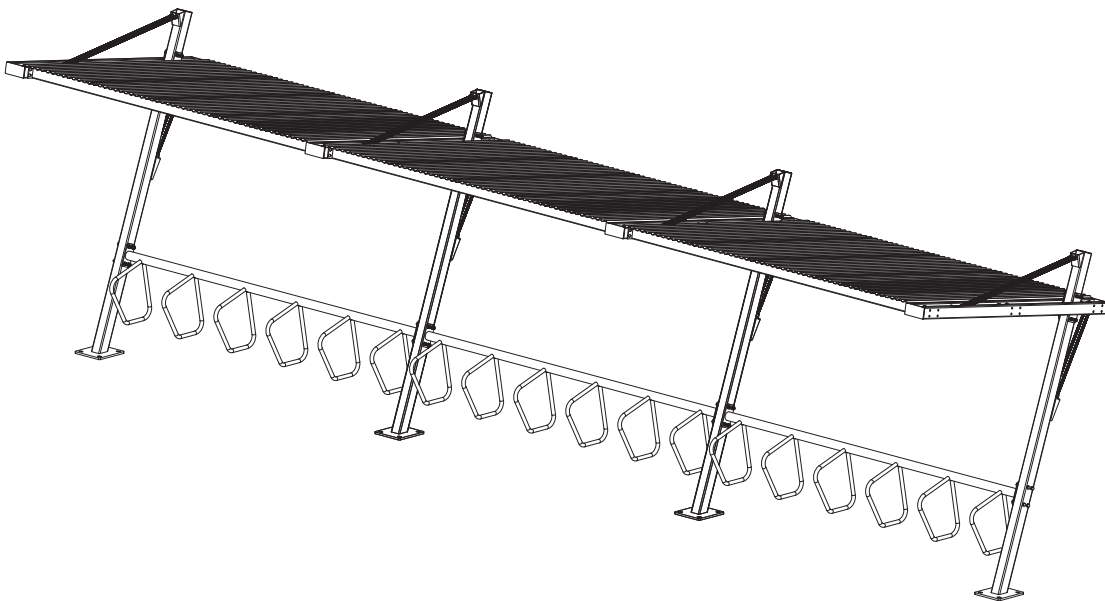
10



Place the next section of Type S Deck and secure with (6) self-drilling screws. The first (3) self-drilling screws will go through both Type S Deck sections.

Continue securing the remaining (3) Type S Deck sections.

11



If building a modular run of shelters, continue adding shelters until complete.