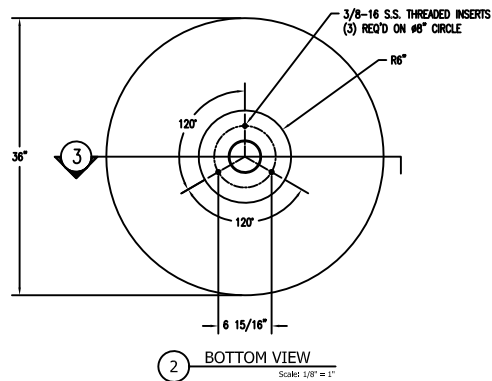
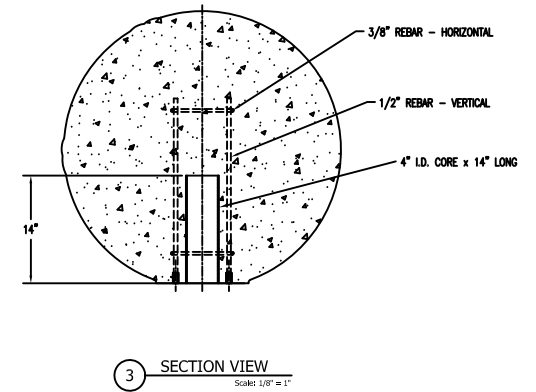
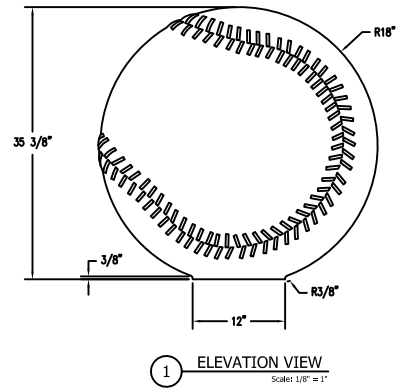
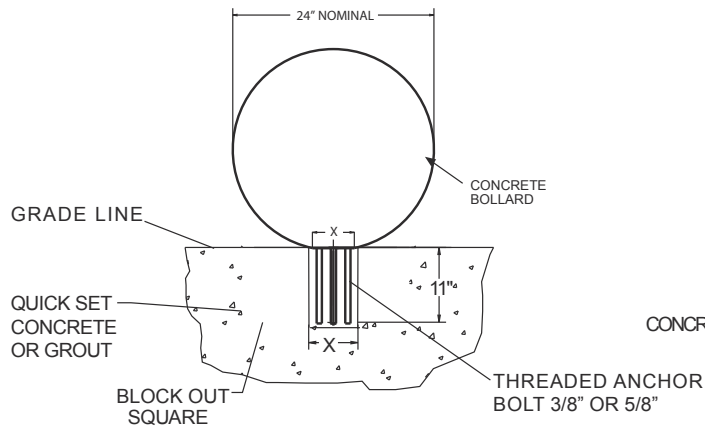


WAUSAU TILE SITE FURNISHINGS									
REVISIONS						DRAWN BY	MJS	JOB	MATERIAL
NO.	DATE	BY	NO.	DATE	BY	TITLE		JOB NO.	CONCRETE
1			4			#24" BASE BALL BOLLARD			WEIGHT 750 LBS.
2			5			SCALE 1/4		DATE 11/05/07	FRESH OPTIONS WHITE W/RED STITCHING
3			6			CHECKED 3-12-08		UNLESS OTHERWISE SPECIFIED DIMENSIONS ARE IN INCHES UNLESS SHOWN OTHERWISE 2 P. 1/4" 3 P. 1/2" 4 P. 3/4" 5 P. 1" 6 P. 1 1/2" 7 P. 2" 8 P. 2 1/2" 9 P. 3" 10 P. 3 1/2" 11 P. 4" 12 P. 4 1/2" 13 P. 5" 14 P. 5 1/2" 15 P. 6" 16 P. 6 1/2" 17 P. 7" 18 P. 7 1/2" 19 P. 8" 20 P. 8 1/2" 21 P. 9" 22 P. 9 1/2" 23 P. 10" 24 P. 10 1/2" 25 P. 11" 26 P. 11 1/2" 27 P. 12" 28 P. 12 1/2" 29 P. 13" 30 P. 13 1/2" 31 P. 14" 32 P. 14 1/2" 33 P. 15" 34 P. 15 1/2" 35 P. 16" 36 P. 16 1/2" 37 P. 17" 38 P. 17 1/2" 39 P. 18" 40 P. 18 1/2" 41 P. 19" 42 P. 19 1/2" 43 P. 20" 44 P. 20 1/2" 45 P. 21" 46 P. 21 1/2" 47 P. 22" 48 P. 22 1/2" 49 P. 23" 50 P. 23 1/2" 51 P. 24" 52 P. 24 1/2" 53 P. 25" 54 P. 25 1/2" 55 P. 26" 56 P. 26 1/2" 57 P. 27" 58 P. 27 1/2" 59 P. 28" 60 P. 28 1/2" 61 P. 29" 62 P. 29 1/2" 63 P. 30" 64 P. 30 1/2" 65 P. 31" 66 P. 31 1/2" 67 P. 32" 68 P. 32 1/2" 69 P. 33" 70 P. 33 1/2" 71 P. 34" 72 P. 34 1/2" 73 P. 35" 74 P. 35 1/2" 75 P. 36" 76 P. 36 1/2" 77 P. 37" 78 P. 37 1/2" 79 P. 38" 80 P. 38 1/2" 81 P. 39" 82 P. 39 1/2" 83 P. 40" 84 P. 40 1/2" 85 P. 41" 86 P. 41 1/2" 87 P. 42" 88 P. 42 1/2" 89 P. 43" 90 P. 43 1/2" 91 P. 44" 92 P. 44 1/2" 93 P. 45" 94 P. 45 1/2" 95 P. 46" 96 P. 46 1/2" 97 P. 47" 98 P. 47 1/2" 99 P. 48" 100 P. 48 1/2"	DWG. NO. TFG202



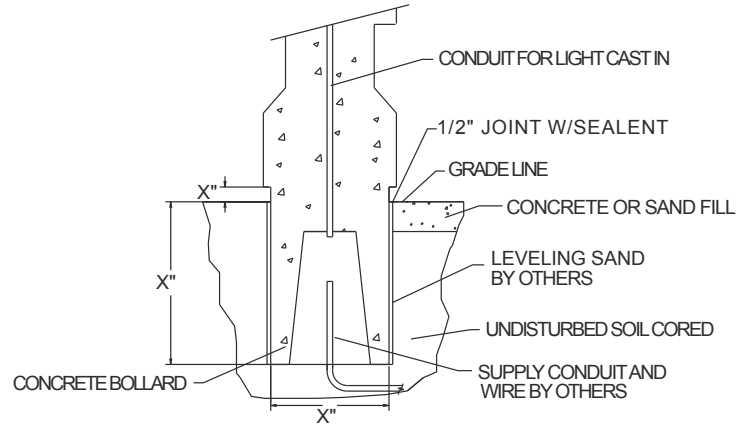
WAUSAU TILE			
4			
3			
2			
1			
REVISION	DESCRIPTION	DRAWN BY	DATE
		PAW	JOB
		JOB NO.	LOCATION
		SCALE	DATE
		FINISH OPTIONS	ITEM NO.
			1 OF 1
			CONCRETE
			WEIGHT 2,200 LBS
			ITEM NO. TFS204
			DWG. NO. 1 OF 1
			UNLESS OTHERWISE SPECIFIED
			INDICATED ARE IN INCHES
			TOLERANCES 1/8"

SPHERE BOLLARD ANCHOR
24" - 30" - 36"

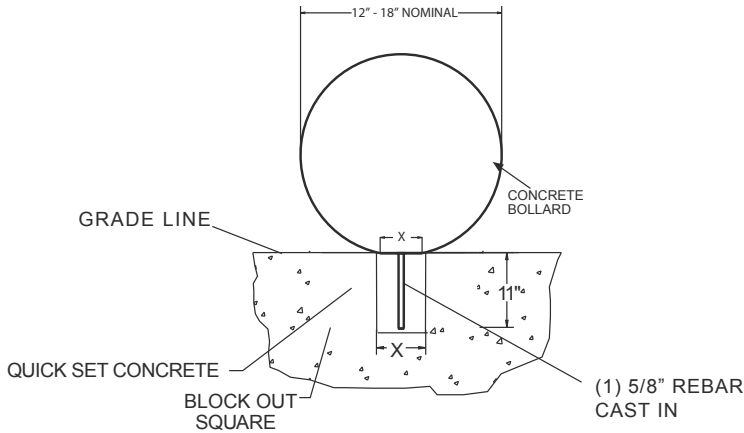


X = BLOCKOUT DIMENSION SHOULD BE 1/2" LESS THAN THE OUTSIDE OF THE SURFACE AREA TOUCHING THE GROUND.

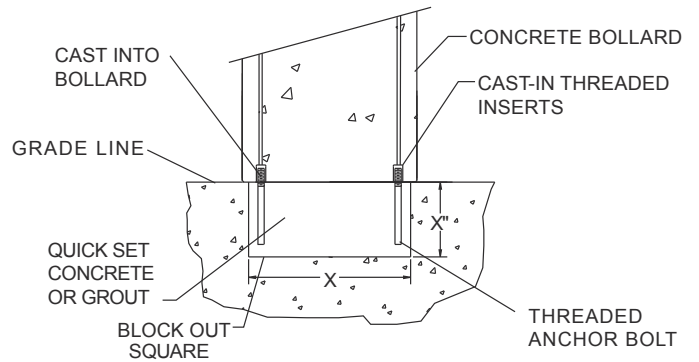
ANCHOR STYLE C



SPHERE BOLLARD ANCHOR
12" - 18"



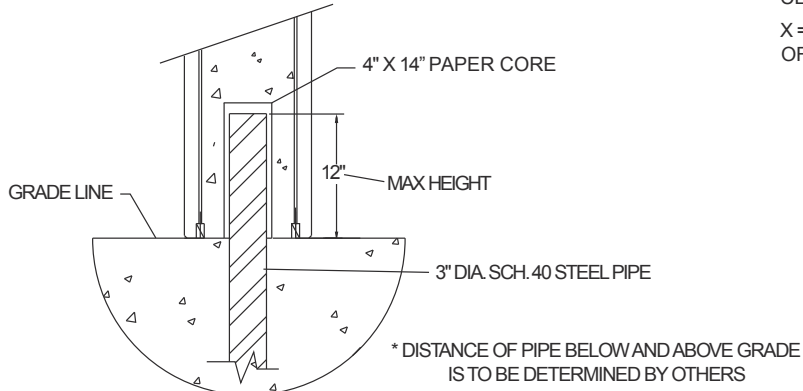
ANCHOR STYLE A



NOTE: THIS TYPE ANCHORING IS NOT USED AS BARRICADE. IF USING BOLLARD WITH LIGHT, RUN CONDUIT THROUGH CENTER OF BOLT PATTERN AND STUB OUT.

X = BLOCKOUT DIMENSION SHOULD BE 1/2" LESS THAN THE OUTSIDE OF THE BOLLARD.

ANCHOR STYLE B



NOTE: THIS TYPE ANCHORING IS ALSO USED AS A BARRICADE. BOLLARD HELD IN PLACE BY STEEL PIPE. STEEL PIPE MUST BE ANCHORED IN CONCRETE FOOTING.

TYP. 12" DIA. CONCRETE BOLLARD SAME. ANCHORING SYSTEM USED ON 14" AND 18" DIA. OR SQ. BOLLARDS.