

Powder-Coat Finishes

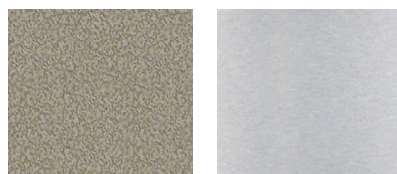
Tier 1

Standard Powder-Coated finishes are Tier 1. Steel, aluminum and other products made of metal are typically powder-coated. We clean all metal products before coating with a high-temperature degreaser, apply a zinc-rich primer (for superior resistance to weathering and rust), then coat with a high-quality polyester powder-coat. Brackets (VTG, WB, WX, VH, VGM) and VertiGreen 3D trellis, unless otherwise specified, are delivered in Pitch, Semi-Gloss. Custom and RAL match colors are also available – ask your salesperson for details.

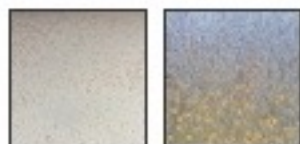


Tier 2

Our Tier 2 finishes are metallic colors – Jaquar Topaz and Silvadillo – which require a clearcoat.



Weathering Steel - New



Weathering Steel - Natural Patina



Other Metals

Weathering Steel (ASTM A606) planters or otherwise will be delivered in a mill-scale finish and will rust when exposed to natural elements. Bollard receivers, receiver covers and lockwell covers are hot dip galvanized after fabrication. Stainless steel products, unless otherwise specified are stainless steel 304 and delivered in a #4 brushed finish. Cast end frames will be ductile cast iron.

Note: True color will be judged on the finished sample once requested and received in hand. Do not rely on the colors printed in this catalog, on our website, or online.