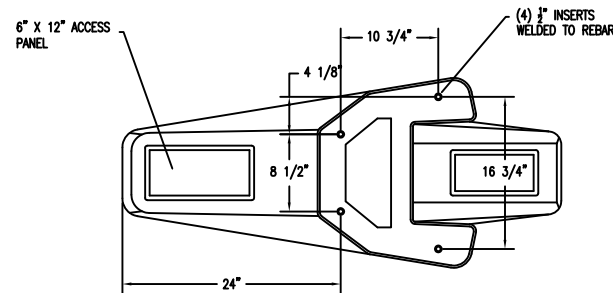
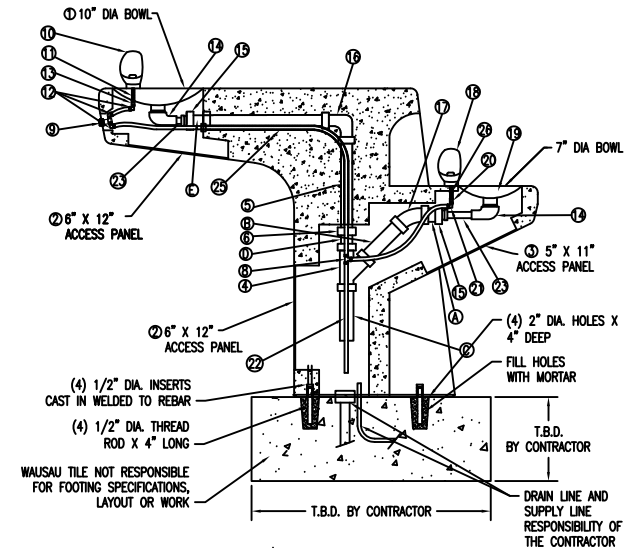


1 SIDE SECTION VIEW  
Scale: 1/8" = 1"



3 BOTTOM VIEW  
Scale: 1/8" = 1"



2 SIDE SECTION VIEW  
Scale: 1/8" = 1"

#### DRINKING FOUNTAIN MOUNTING INSTRUCTIONS

- 1) DRILL HOLES INTO FOOTING PER PATTERN OF INSERTS ON BOTTOM OF FOUNTAIN.
- 2) THREAD (4) 1/2" DIA. ROD INTO (4) INSERTS ON BOTTOM OF FOUNTAIN.
- 3) FILL DRILLED HOLES WITH NON-SHRINK MORTAR OR EPOXY.
- 4) PLACE FOUNTAIN OVER HOLES AND LOWER DOWN TO FOOTING.
- 5) BRACE FOUNTAIN UNTIL MORTAR IS HARDENED

PLEASE CONTACT YOUR LOCAL GOVERNMENT OFFICE  
FOR BUILDING CODES IN YOUR AREA

PLEASE CONTACT YOUR LOCAL  
GOVERNMENT OFFICE FOR  
BUILDING CODES IN YOUR AREA

FOR ADDITIONAL INFORMATION OR  
A FULL SCALE ANCHOR DETAIL,  
CONTACT WAUSAU TILE AT  
800-388-8728

PARTS LIST FOR ASSEMBLY KIT TP 7073 (TP131418)			
ITEM #	DESCRIPTION	PART #	QTY.
1	10" DIA. BOWL	100100	1
2	6" X 12" ACCESS PANEL	100111	2
3	5" X 11" ACCESS PANEL	100112	1
4	3/4" X 1/2" W/40 PVC PIPE	100113	1
5	30' CP 1/2" W/40 PVC PIPE	100114	1
6	1/2" W/40 PVC COUPLER	100115	2
7	1/2" W/40 PVC ELBOW	100116	1
8	1/2" SOCKET TO 1/4" COMPRESSION RING	100117	2
9	1/4" X 12-20 G1/8 EXT TUB (CUT IT HALF)	100118	2
10	1/2" ELECTRICAL CONDUIT	100119	10'
11	DRY-SET GROUT	100120	2
12	7" DIA. BOWL	100121	1
13	3/8" PLASTIC TUBING	100122	20'
14	WITH COLA BUBBLER CP	100123	1
15	1/2" BUBBLER HD	100124	1
16	3/8" DIA. TUBING	100125	1
17	1/4" X 1/2" W/40 PVC PIPE	100126	1
18	1/4" X 1/2" W/40 PVC PIPE	100127	1
19	1/4" X 1/2" W/40 PVC PIPE	100128	1
20	1/4" X 1/2" W/40 PVC PIPE	100129	1
21	1/4" X 1/2" W/40 PVC PIPE	100130	1
22	1/4" X 1/2" W/40 PVC PIPE	100131	1
23	1/4" X 1/2" W/40 PVC PIPE	100132	1
24	1/4" X 1/2" W/40 PVC PIPE	100133	1
25	1/4" X 1/2" W/40 PVC PIPE	100134	1
26	1/4" X 1/2" W/40 PVC PIPE	100135	1

WAUSAU TILE SITE FURNISHINGS									
REVISIONS					DRAWN BY		JOB		MATERIAL
NO.	DATE	BY	NO.	DATE	BY	TITLE	JOB NO.	WEIGHT	
1	11/6/11	JFZ	4			SCALE			FINISH OPTIONS
2			5			CHECKED			DATE
3			6						FINISH OPTIONS

UNLESS OTHERWISE SPECIFIED  
DIMENSIONS ARE IN INCHES  
2 PL. 3/8" 5 PL. 3/8"

TF7071